



PEDRO RODRÍGUEZ GARRIDO

a d a m gallery

PEDRO RODRÍGUEZ GARRIDO

24 CORK STREET London W1S 3NJ t: 0207 439 6633

13 JOHN STREET Bath BA1 2JL t: 01225 480406

e: info@adamgallery.com www.adamgallery.com

Pontus Carle was born in Sweden in 1955. In 1959 his family moved to Paris. It was there that he began to attend French and international schools. When he turned 18, he decided to dedicate himself to art, and began to study etching with Henri Goetz, an American artist who ran a school in Montparnasse. He was then accepted at the Beaux-Arts in Paris, where he studied painting and lithography. School in Paris was followed by a year in Sweden spent pursuing his study of lithography with Bertil Lundberg, the renowned Swedish print maker. After finishing his studies, he traveled in Europe and Africa and began to exhibit his work. In 1980 he visited New York and settled there, living in downtown Manhattan in the midst of a thriving art scene and occupying studios in Soho, TriBeCa and Chinatown. He would live in New York for nearly a decade, until 1989. New York impacted him strongly and he has said that the first years there were like being back in school – his work went through a total revolution. The second half of his extended sojourn in the city was extremely productive and he had a number of exhibitions in both New York and around the United States. By 1989, he was drawn back to Europe and based himself in Paris. In 1990 an opportunity to exhibit his work in a Frankfurt Gallery opened up new possibilities beyond France. The artist's exhibition in Frankfurt brought him into contact with people working in West and East Berlin, which would eventually lead to a shift from Paris to a studio in Kreuzberg. Berlin was the focus of several projects and he began to exhibit there and throughout Germany. The 90's saw the artist expand his reach with numerous shows around Europe, especially in Sweden, Germany and France and there were also occasional events in the United States, including the sales of artworks to a variety of institutions. Gradually a new work cycle began to take hold that found the artist travelling and working between studios in the south of Sweden, Berlin and Paris, a pattern of peregrination that continues to this day.

View from the Shard

Oil on panel
150 x 150 cm



High Street

Oil on panel
100 x 100 cm





Bus

Oil on panel
50 x 50 cm



East River

Oil on panel
100 x 100 cm



Yellow Line

Oil on panel
35.5 x 36 cm



Chicago

Oil on panel
50 x 100 cm

Thames

Oil on panel
100 x 100 cm





Entering Seville

Oil on panel
35 x 75 cm



Street, New York

Oil on panel
60 x 120 cm



Taxi

Oil on panel
60 x 60 cm



Chicago II

Oil on panel
100 x 100 cm



Traffic at Sunset

Oil on panel
35 x 35 cm



February, London

Oil on panel
80 x 130 cm



Shadows on the Road

Oil on panel
39 x 47 cm



Panorama, New York

Oil on panel
61 x 122 cm

The Journey Begins

Oil on panel
150 x 150 cm





Green Traffic Light

Oil on panel
60 x 60 cm



Life in London

Oil on panel
61 x 122 cm



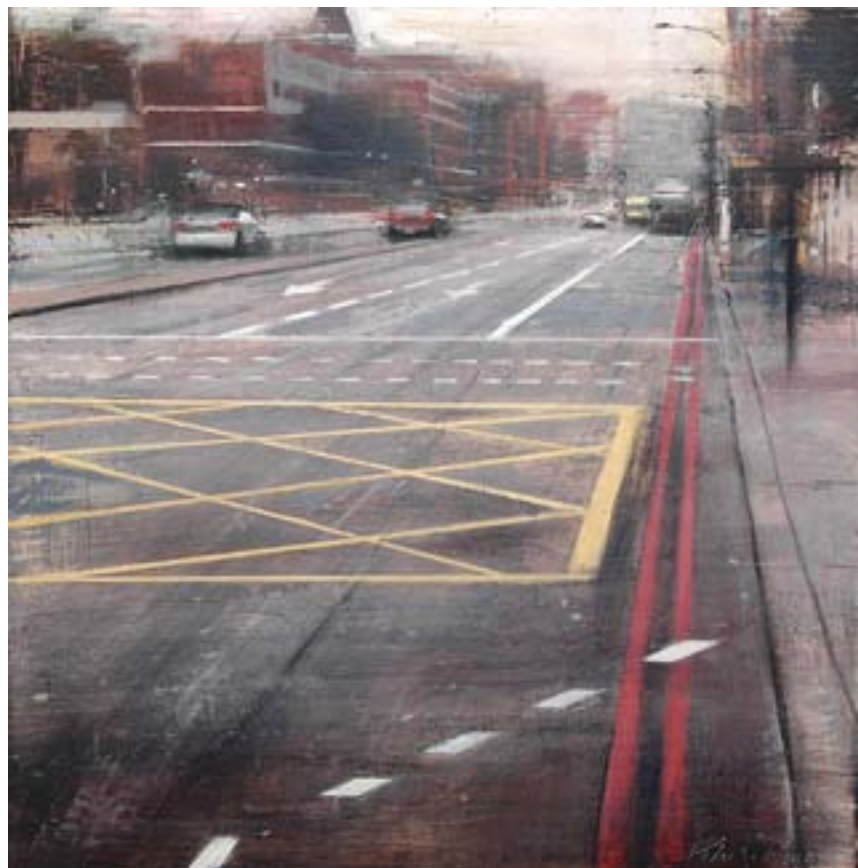
Rain on the Highway

Oil on panel
39 x 47 cm



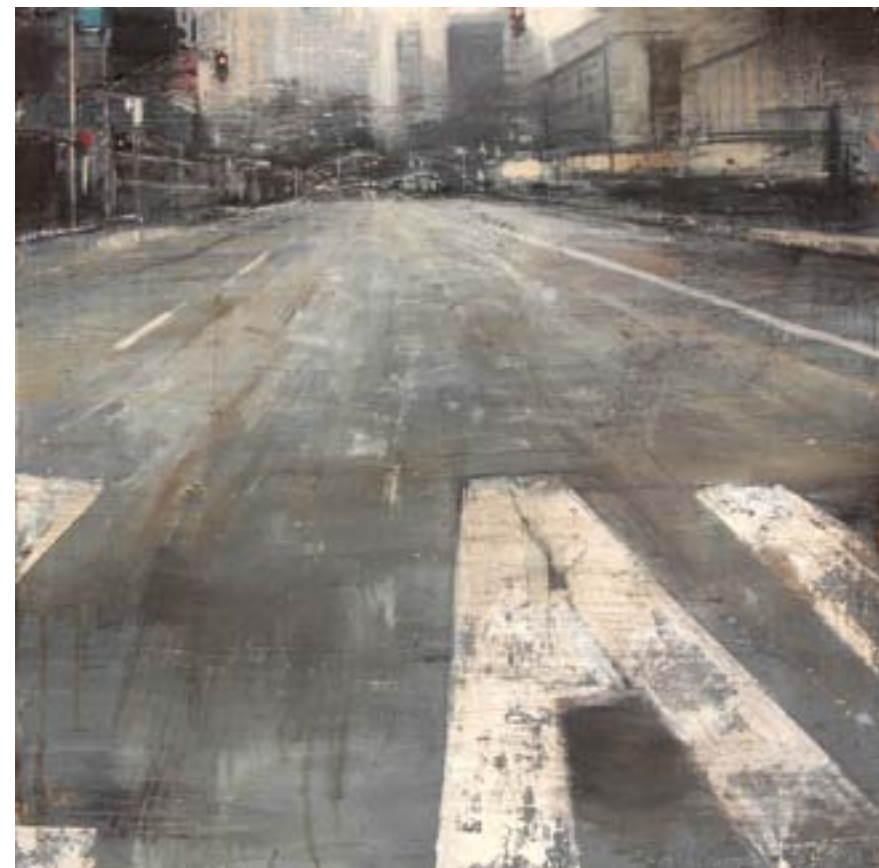
Thames II

Oil on panel
60 x 60 cm



Street, London

Oil on panel
100 x 100 cm



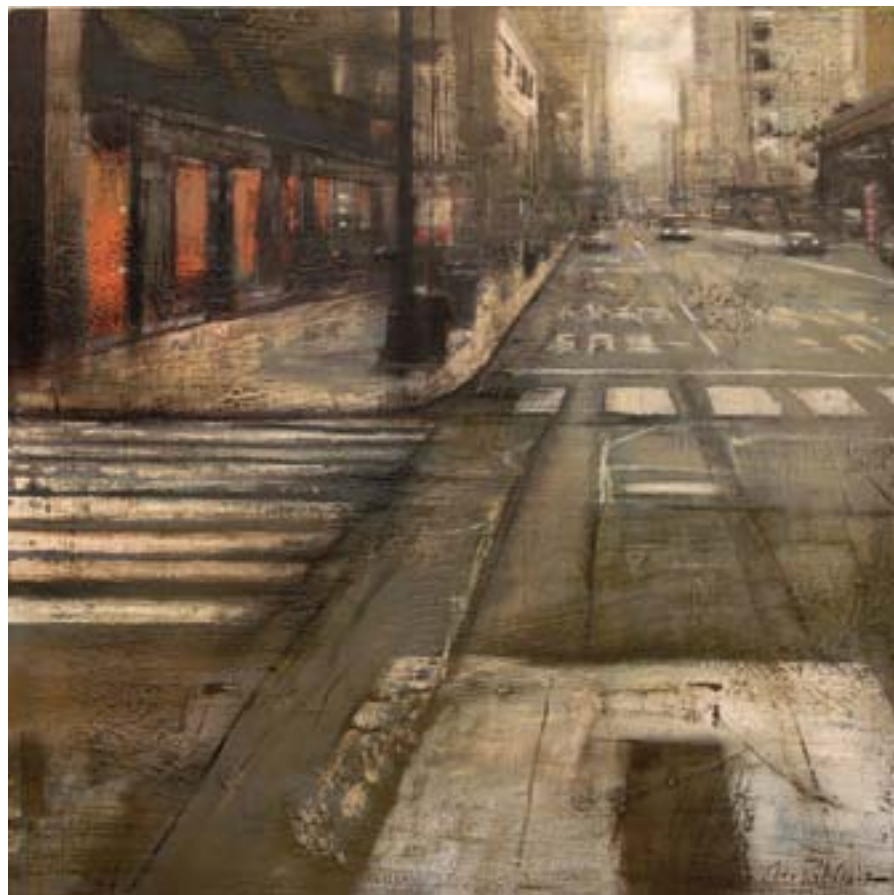
Park Lane

Oil on panel
60 x 60 cm

High Street II

Oil on panel
100 x 100 cm





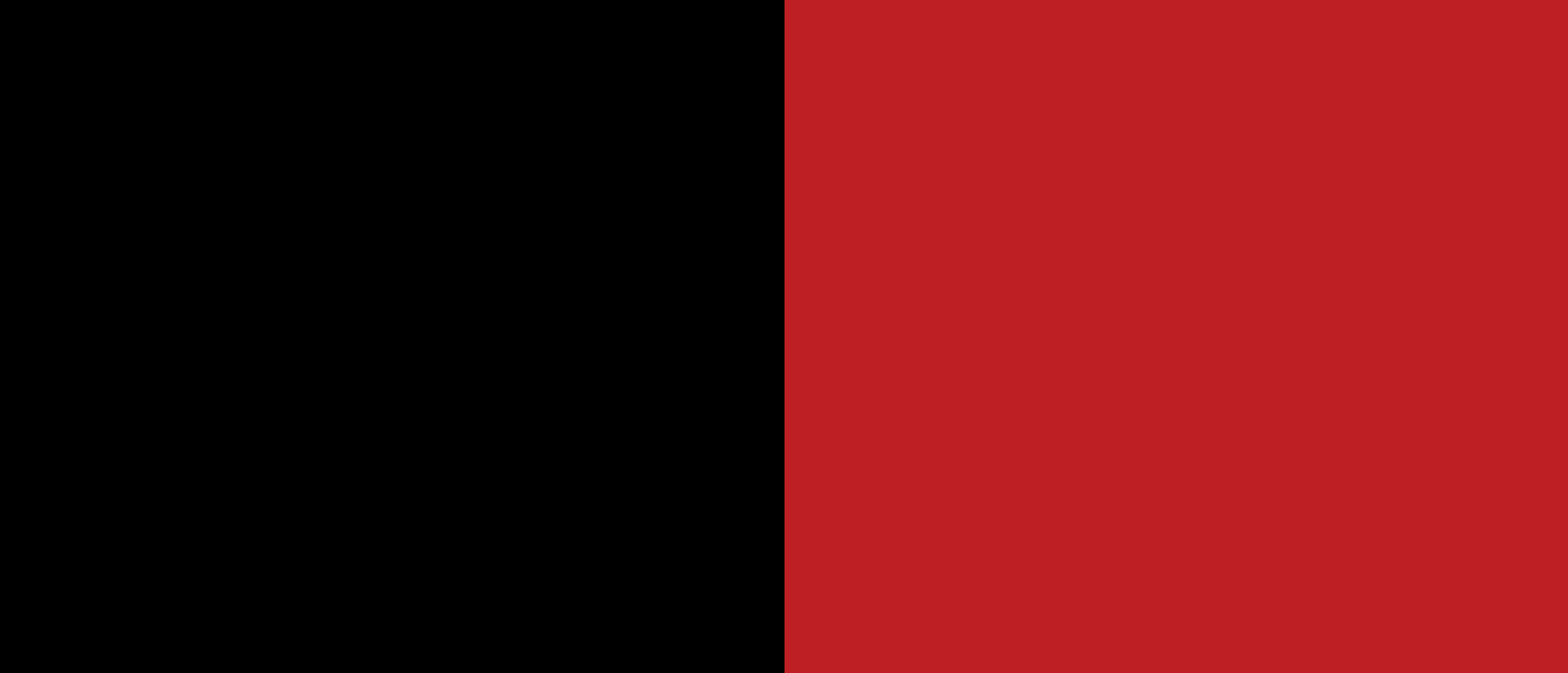
Street II, New York

Oil on panel
75 x 75 cm



Highway

Oil on panel
95 x 130 cm



a d a m gallery
www.adamgallery.com

24 CORK STREET London W1S 3NJ t: 0207 439 6633
13 JOHN STREET Bath BA1 2JL t: 01225 480406